

RESOLUTION NO. 97-44

**RESOLUTION CREATING RURAL SPECIAL IMPROVEMENT
DISTRICT KNOWN AS R.S.I.D. #658 AND
MAINTENANCE DISTRICT KNOWN AS R.S.I.D. #658M
QUARTER HORSE ACRES SUBDIVISION**

WHEREAS, the Board of County Commissioners of Yellowstone County, Montana, gave notice of the passage of the Resolution of Intention to create the above-named district by causing the same to be published in two issues of the *Yellowstone County News* and also caused a copy of such notice to be posted in three (3) public places within the boundaries of the district, and mailed to every person, firm or corporation owning real property within the proposed district at their last known address upon the same day as such notice was first published, the first publication of said notice and proof of its publication, posting and mailing as aforesaid is on file with the County Clerk and Recorder; and,

WHEREAS, the Board of County Commissioners hereby finds, determines and declares that:

1. All lands are benefited and no lands which are not benefited have been included within the district.
2. That the protests which were filed against the creation of said District were insufficient and should be overruled and denied.

NOW THEREFORE, BE IT HEREBY RESOLVED by the Board of County Commissioners of Yellowstone County, Montana, that:

1. The Commissioners have acquired jurisdiction to order proposed improvements, and they do hereby create Rural Special Improvement District #658 and Rural Special Improvement Maintenance District #658M.
2. The District and the Maintenance District are created to ensure the construction of roadway improvements in Quarter Horse Acres Subdivision as is more fully set forth in the Resolution of Intention on file herein, and for maintenance of those improvements.
3. The total project costs, including construction costs, incidental expenses, engineering fees, legal fees and administrative costs, shall not exceed the sum of Fifty Nine Thousand Two Hundred Forty Seven Dollars (\$59,247.00). Payment of the assessments to defray the cost of the construction of the improvements shall be spread over a term not to exceed eight (8) years. Assessments shall be made on property tax statements beginning in November, 1997 (see Exhibit B). The first year's assessment will include more than one (1) year's interest and subsequently the first year's payment will be higher than the second thru eighth year's assessments. Property owners will have the opportunity to pay off their original principal assessment without interest at the time of the original assessment.
4. The boundaries of the District are hereby described and designated on the attached Exhibit E and the lands in the District are shown on the map attached as Exhibit D.

Resolution Creating RSID #658/658M
Quarter Horse Acres Subdivision
5/1/97

5. The number of the rural special improvement district shall be No. 658 and the number of the maintenance district therefor shall be No. 658M.

6. All the costs and expenses for the initial construction of the improvements, including all costs and expenses and all subsequent assessments for maintenance will be assessed against the "assessable areas" basis of assessment in accordance with MCA 7-12-215(a) with each dwelling unit or equivalent unit being assessed by taking its assessable square footage as set forth on Exhibit B attached hereto. The cost of assessments for each lot, block and unit will be an equal amount based upon the total cost of the improvements and will be assessed in the manner more particularly set forth on the attached Exhibits B and E.

The estimated original assessment per lot is \$1,559.00; over an eight (8) year 8% Estimated Annual Debt Assessment, the cost will be \$272.00 for each lot.

7. The Commissioners have appointed or will appoint an ad hoc committee to make recommendations to the Board of County Commissioners with regard to an assessment to be made for the maintenance and operation of the project, and for a determination as to how those assessments shall be spent.

PASSED AND ADOPTED by the Board of County Commissioners of Yellowstone County, Montana, this 3rd day of June, 1997.

BOARD OF COUNTY COMMISSIONERS
YELLOWSTONE COUNTY, MONTANA

Bill Kennedy
Bill Kennedy, Chairman

Mike Mathew
Mike Mathew, Member

James A. Ziegler Sr.
James A. Ziegler, Sr., Member

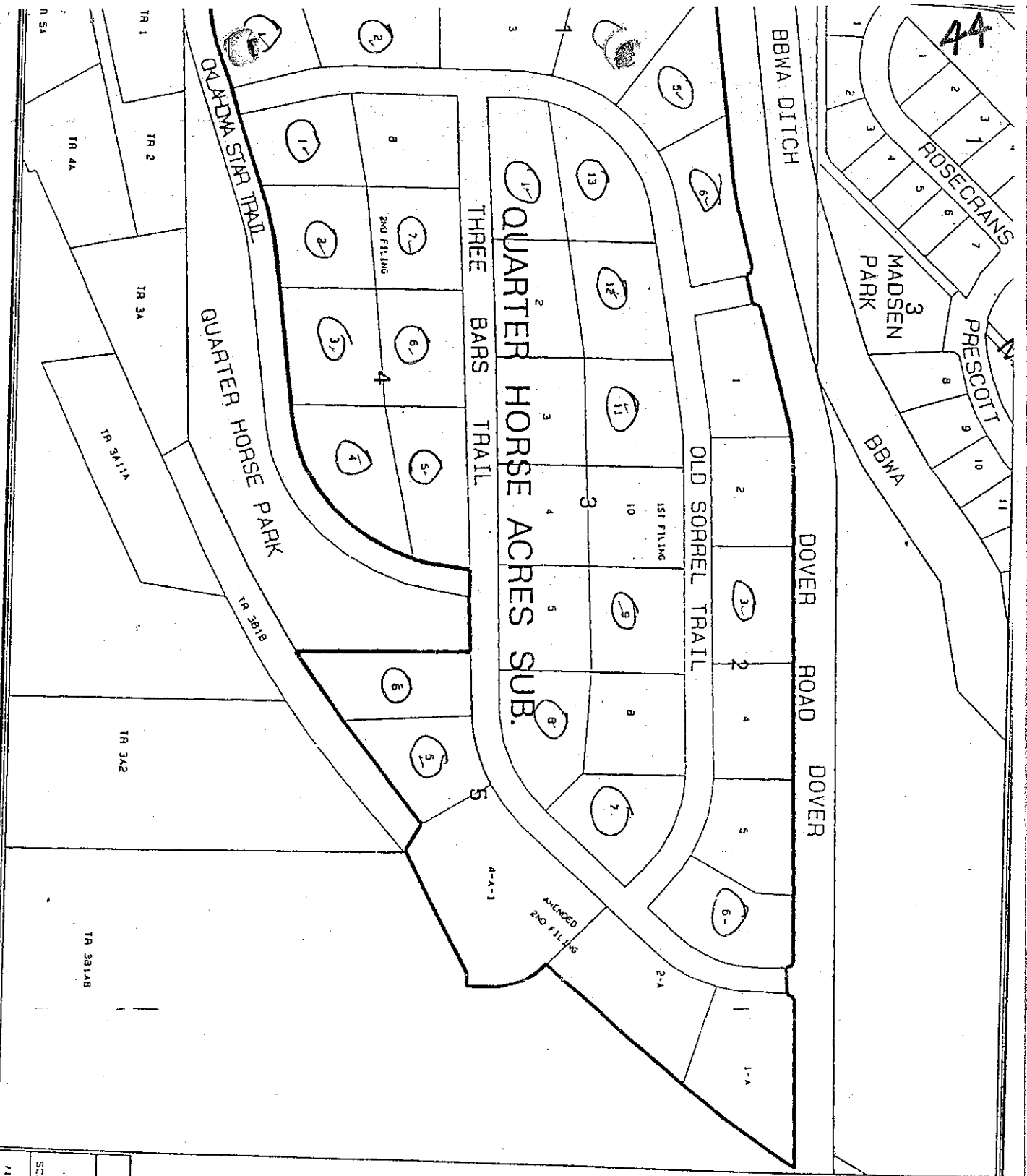
(SEAL)
ATTEST:

Tony Nave
Tony Nave, Clerk and Recorder

EXHIBIT B
PROJECTED ANNUAL ASSESSMENT PER PROPERTY
AS OF AUG 14, 1996

QUAN	Tax Code	Quarter Horse Acres Subdiv.		Original Assessment	8 yr 8% Estimated Annual Debt Assessment
		Lot	Block		
1	C10522	1	1	1,559	272
2	C10523	2	1	1,559	272
3	C10364	3	1	1,559	272
4	C10365	4	1	1,559	272
5	C10366	5	1	1,559	272
6	C10367	6	1	1,559	272
7	C10368	1	2	1,559	272
8	C10369	2	2	1,559	272
9	C10370	3	2	1,559	272
10	C10371	4	2	1,559	272
11	C10372	5	2	1,559	272
12	C10373	6	2	1,559	272
13	C10374	1	3	1,559	272
14	C10375	2	3	1,559	272
15	C10376	3	3	1,559	272
16	C10377	4	3	1,559	272
17	C10378	5	3	1,559	272
18	C10379	6	3	1,559	272
19	C10380	7	3	1,559	272
20	C10381	8	3	1,559	272
21	C10382	9	3	1,559	272
22	C10383	10	3	1,559	272
23	C10384	11	3	1,559	272
24	C10385	12	3	1,559	272
25	C10386	13	3	1,559	272
26	C10524	1	4	1,559	272
27	C10525	2	4	1,559	272
28	C10526	3	4	1,559	272
29	C10527	4	4	1,559	272
30	C10528	5	4	1,559	272
31	C10529	6	4	1,559	272
32	C10530	7	4	1,559	272
33	C10531	8	4	1,559	272
34	C10532	1-A	5	1,559	272
35	C10533	2-A	5	1,559	272
36	C10535A	4-A-	5	1,559	272
37	C10536	5	5	1,559	272
38	C10537	6	5	1,559	272
TOTALS				59,242	10,336

44



This document is intended for informational purposes only. Any information on this document is not guaranteed to be accurate or current.

This document may not be reproduced in any way without advanced permission from the Yellowstone County GIS management committee.

This map was plotted in
 Montana
 NAD83
 State Plane Coordinates
 (in feet)

YELLOWSTONE COUNTY GIS
 BILLINGS, MONTANA

QUARTER HORSE ACRES SUBD

SCALE: 1" = 300ft

DATE: 01 Aug 96 15:15:08 Thu 8/8/96

FILENAME: /work/ty/assess/4040113/8001/qrh-acres.dwg

Exhibit 'D'